

Sunday

Monday

Tuesday

Wednesday

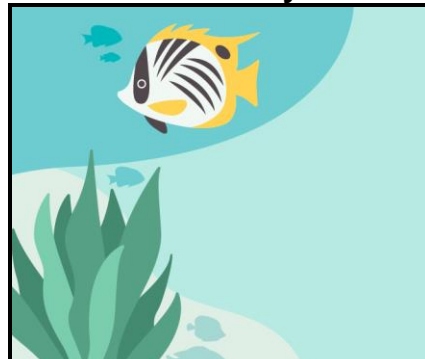
Thursday

Friday

Saturday

June 2023

Redeemer Health Care Center



See IN2L programs-3W

4
See IN2L programs-3W
5
10:15 Morning Exercise-2E
10:45 Learn about MN Monuments -2E
2:30 Parachute Games-2E
6:15 See Lucynt Table3E

11
10:15 Morning Exercise-2E
2:15 Bingo-2E
6:15 See Lucynt Table -3E

17
See IN2L programs-3W
18
10:15 Morning Exercise-2E
10:45 Finish the Lyric -2E
12:00 Cookout - front courtyard
6:15 See Lucynt Table -3E
Juneteenth

24
10:15 Morning Exercise-2E
25
2:30 Performance Magic by Markus Clegg-CH
6:15 See Lucynt Table3E
26

6
10:00 Resident Council -CH
1:30 Catholic Prayer Service-CH
2:15 Bingo - 2E
6:15 Trivia Night - 3E

12
10:00 Worship Service - CH
2:30 50s Birthday Party with Music by Mary Hall -2E
6:15 Apples to Apples-3E

19
10:00 Worship Service - CH
1:30 Catholic Prayer Service-CH
2:15 Bingo - 2E
6:15 Guess in 10 - 3E

26
10:00 Worship Service - CH
2:15 Bingo - 2E
6:15 Bonfire night - 3E
27

7
10:30 Bean Bag Toss-2E
10:45 Travel Talk -2E
2:30 Bowling -CH

13
10:30 Ring Toss -2E
10:45 Flag Trivia
2:30 Afternoon Exercise-2E
3:00 Flag Day Craft -2E
Flag Day (US)

20
10:30 Balloon Volleyball-2E
10:45 Summer Trivia
2:30 The Jugsluggers Play in the Chapel
Summer Begins

27
10:30 Flarts -2E
10:45 Sharing your Favorite Musicians-2E
2:30 Afternoon Exercise-CH
3:00 Crazy Bocce Ball -CH
28

8
10:00 Bible Study-CH
10:45 Java Memory -3W
2:15 Program Planning Committee -2E
2:45 Afternoon Exercise -2E
3:15 IN2L Games-3E

14
10:00 Bible Study-CH
10:45 Java Memory -3W
2:30 Afternoon Exercise -2E
3:00 Writing Father's Day cards with Grandma's House -2E

21
10:00 Bible Study-CH
10:45 Java Memory -3W
2:30 Jewelry making with Amy -2E
22

28
10:00 Bible Study-CH
10:45 Java Memory -3W
2:30 Afternoon Exercise -3E
3:00 IN2L Games-3E
29

9
10:00 Hymn Sing - CH
2:30 Afternoon Exercise -2E
3:00 IN2L Games-3E

15
10:00 Hymn Sing - CH
10:30 Oculus -CH
1:30 Playing Hand-Chimes -CH
2:30 Show and Tell, then Drumming with Grandma's House -CH

22
10:00 Hymn Sing - CH
2:30 Show and Tell, then Drumming with Grandma's House -CH
23

29
10:00 Oculus -CH
1:30 Playing Hand-Chimes -CH
2:30 Show and Tell, then Drumming with Grandma's House -CH
30

10
9:00 Dog Visits-In Residents' Rooms
2:30 Afternoon Exercise -2E
3:00 Playing Hand-Chimes -2E

16
10:00 Dog Visits-In Residents' Rooms
2:30 Afternoon Exercise -2E
3:00 Finish the Phrase -2E

23
10:30 Dog Visits-In Residents' Rooms
2:30 Afternoon Exercise -2E
3:00 Playing Hand-Chimes -2E
24

30
Key:
CH: Chapel
2E: 2E Dining Room
2W: 2W Dining Room
3E: 3East Dining Room
3W: 3W Dining Room

Programs & Times are Subject to Change (Please Reference the White Boards for Daily Updates on the Daily Activity Programs at Redeemer)